

# Case Presentation

**Georgios I. Papaioannou, MD**

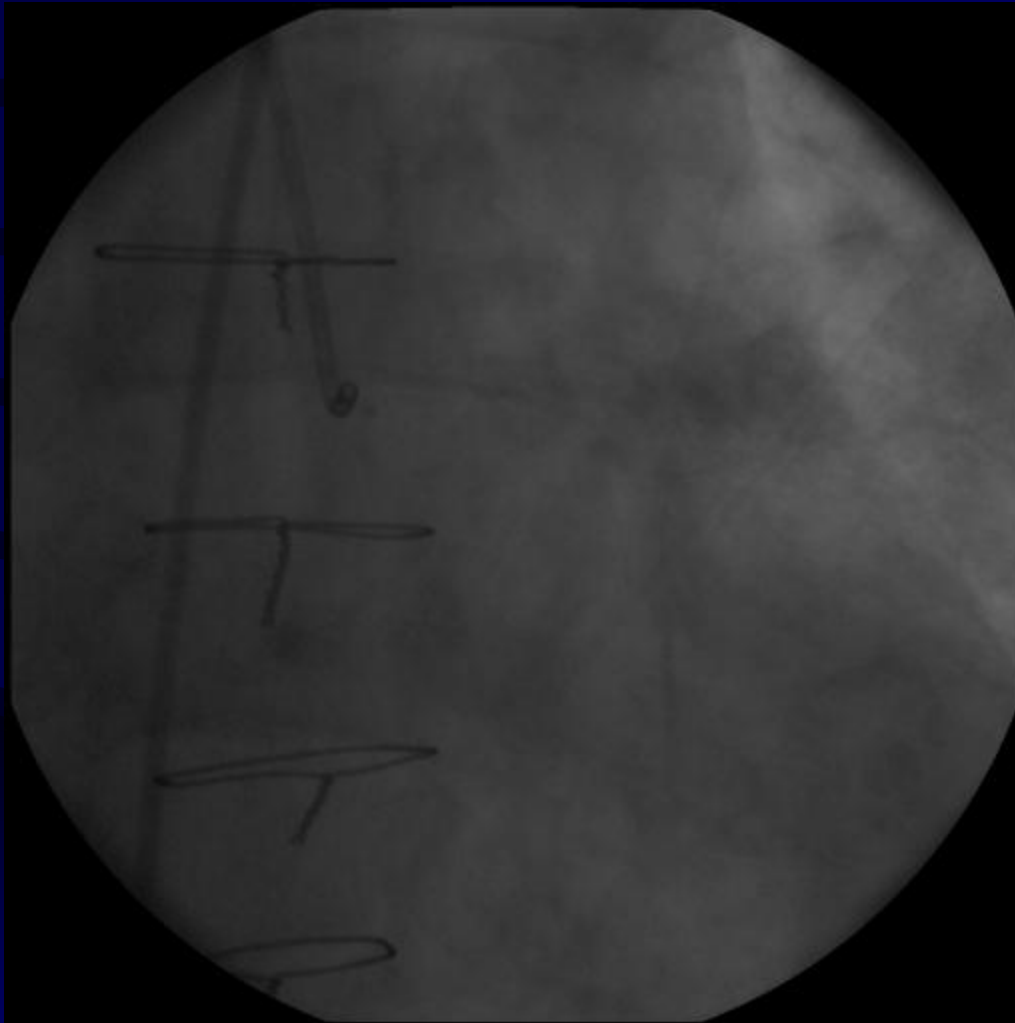
**Athens Medical Center**

**Cardiac Catheterization Laboratory**

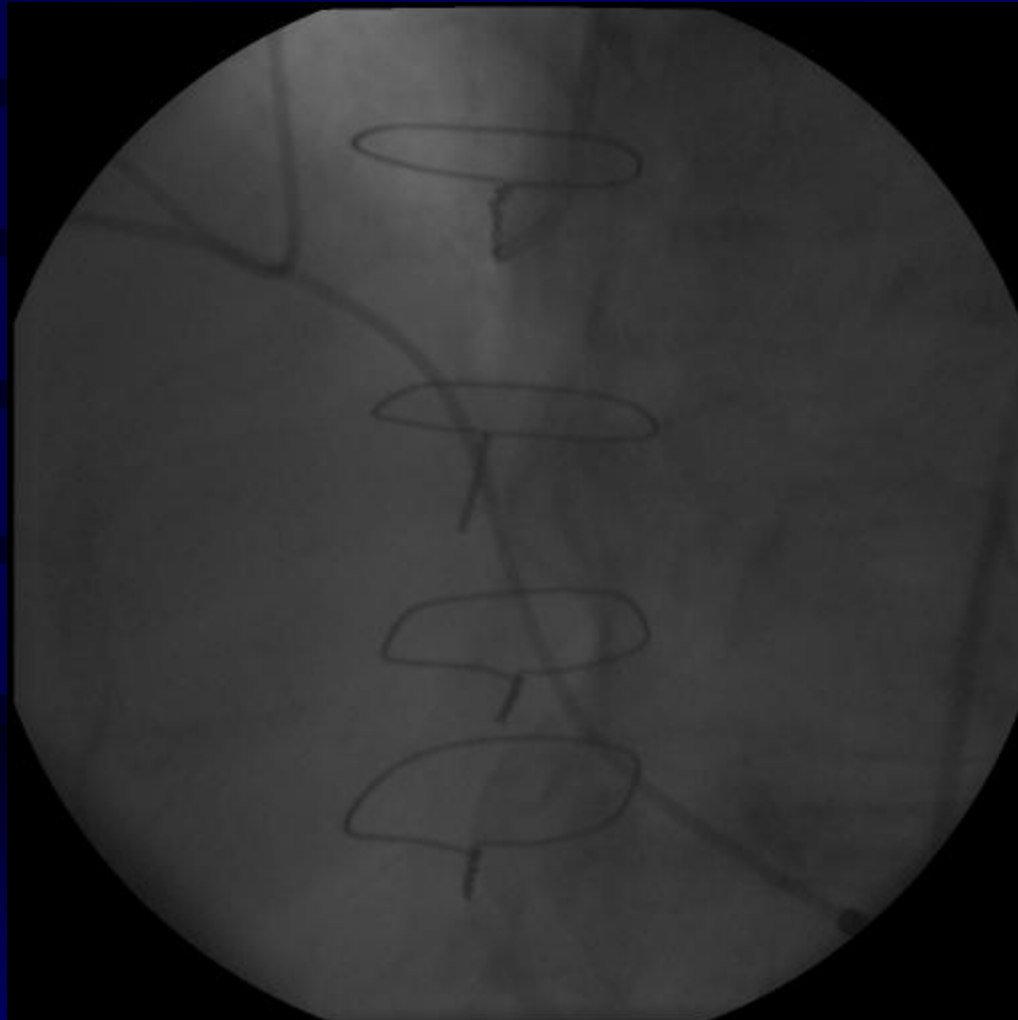
# Clinical History

- 87 year old male with prior hx of CAD s/p CABGx3 in 2001 (SVG→LAD, SVG→OM, SVG→RCA), s/p Permanent Pacer in 2004, had 2 recent admissions for UA /Biomarker positive ACS stabilized with Rx – in good physical shape
- CRF: DM, HTN, Dyslipidemia, CRF (Crea=1.9)
- Echo with EF=45%, anterior+inferior hypokinesis, moderate MR – no stress test performed – referred for angiography

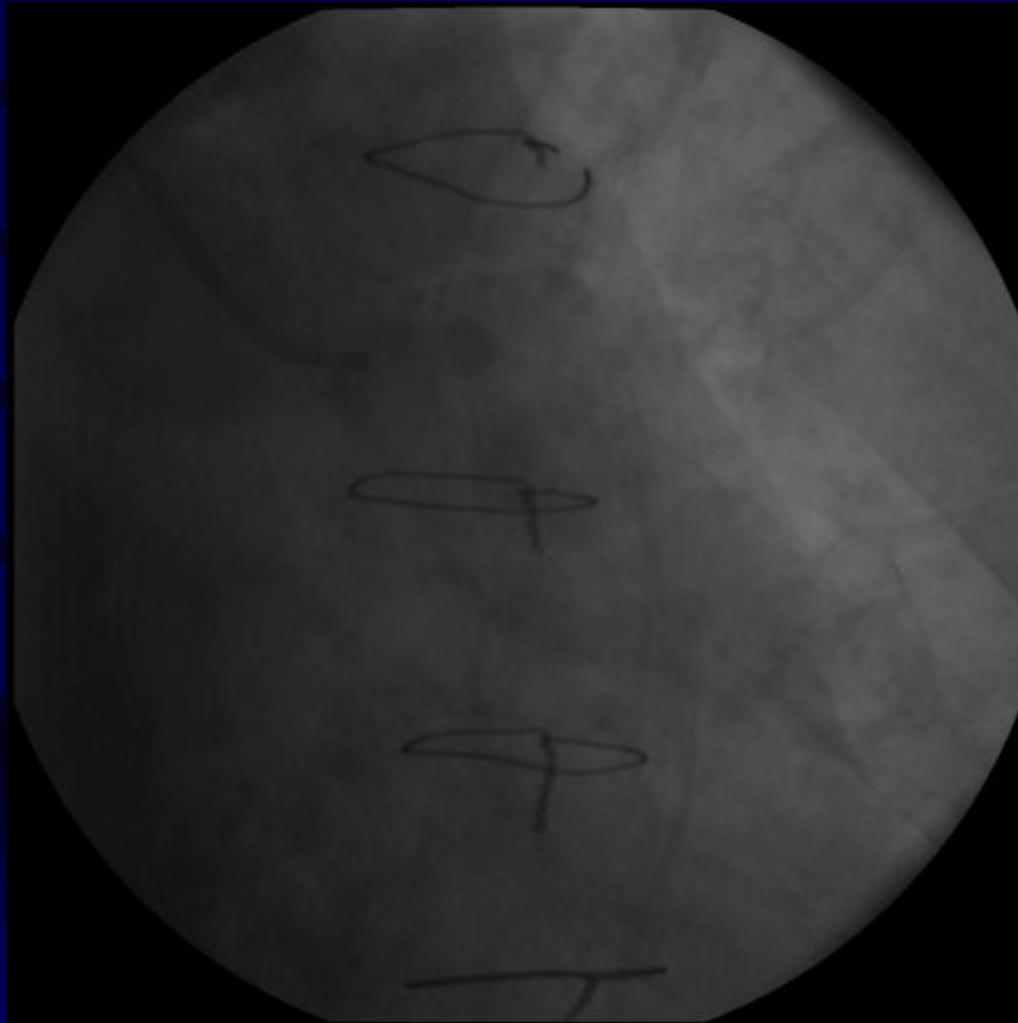
# Angiogram 1 mo ago—Native LCA



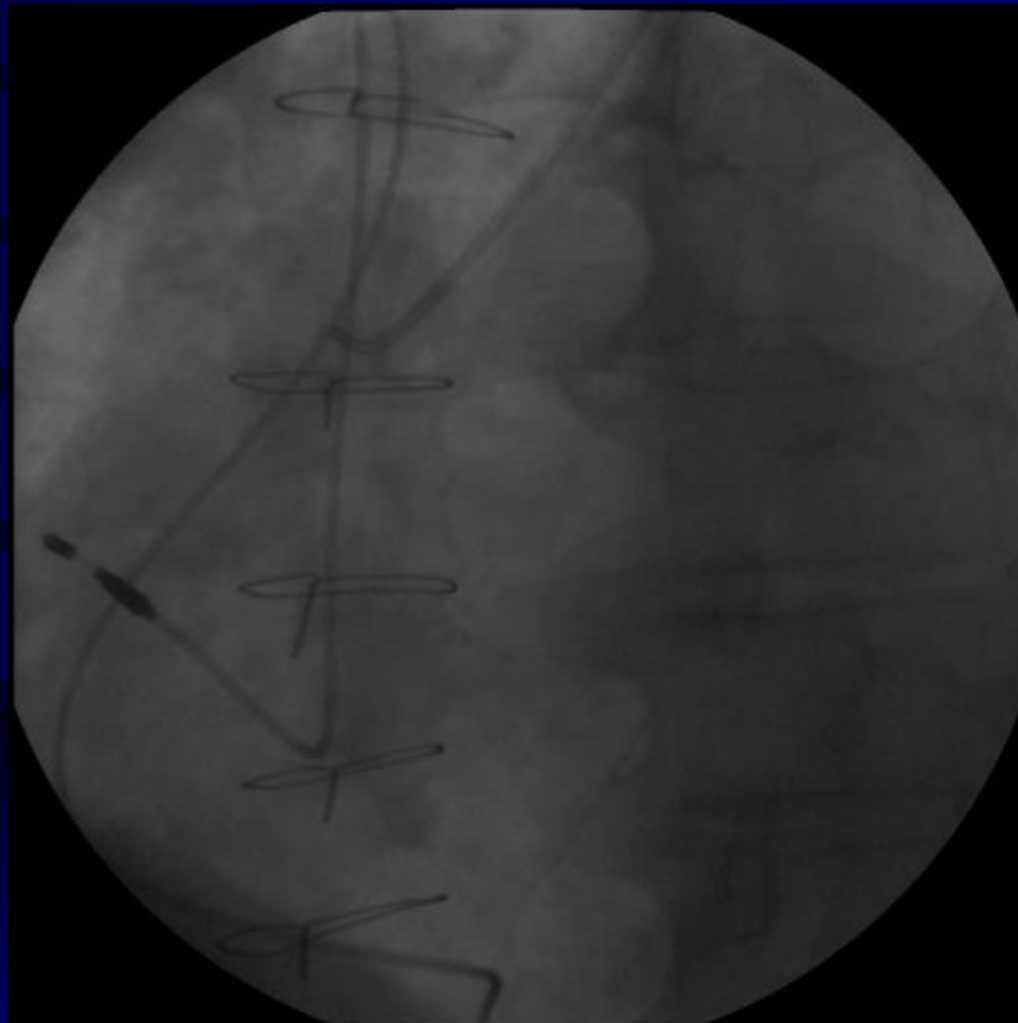
# Native RCA



# SVG→OM

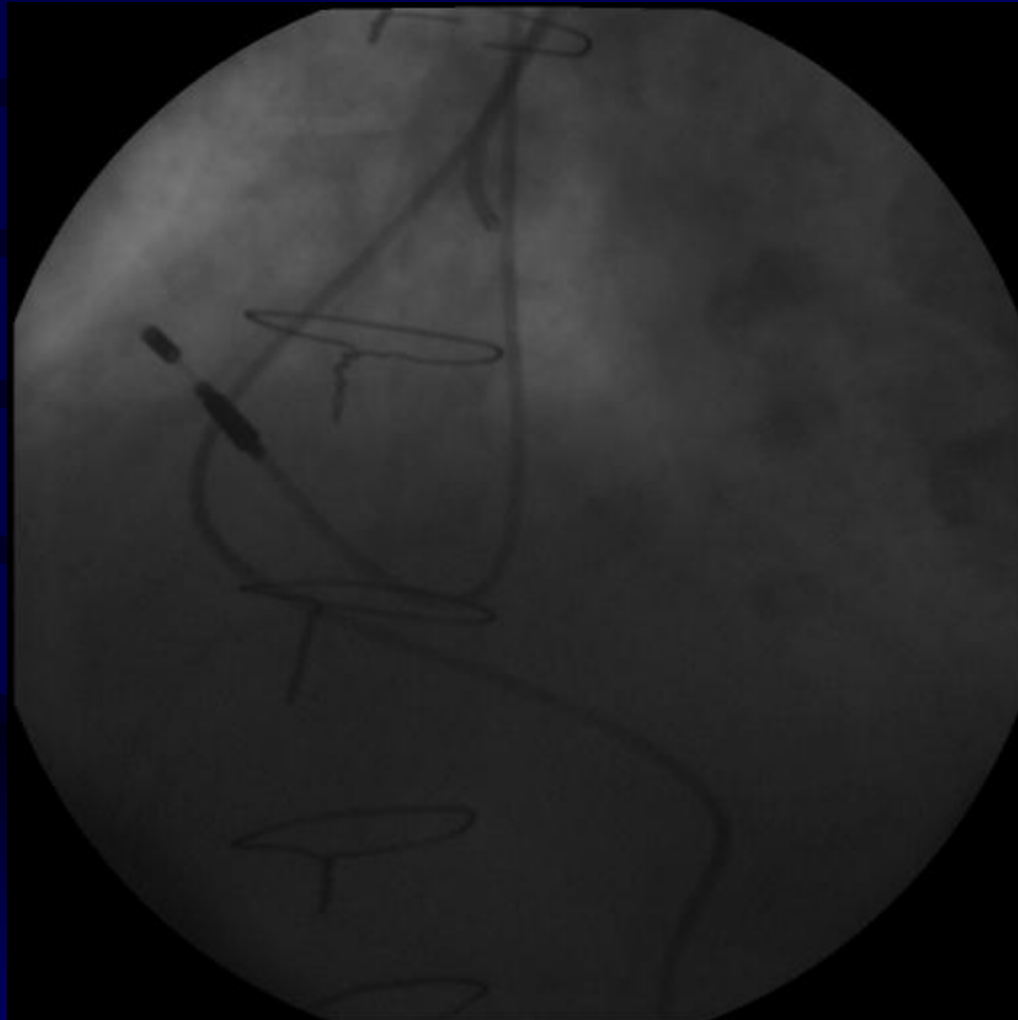


# SVG→RCA

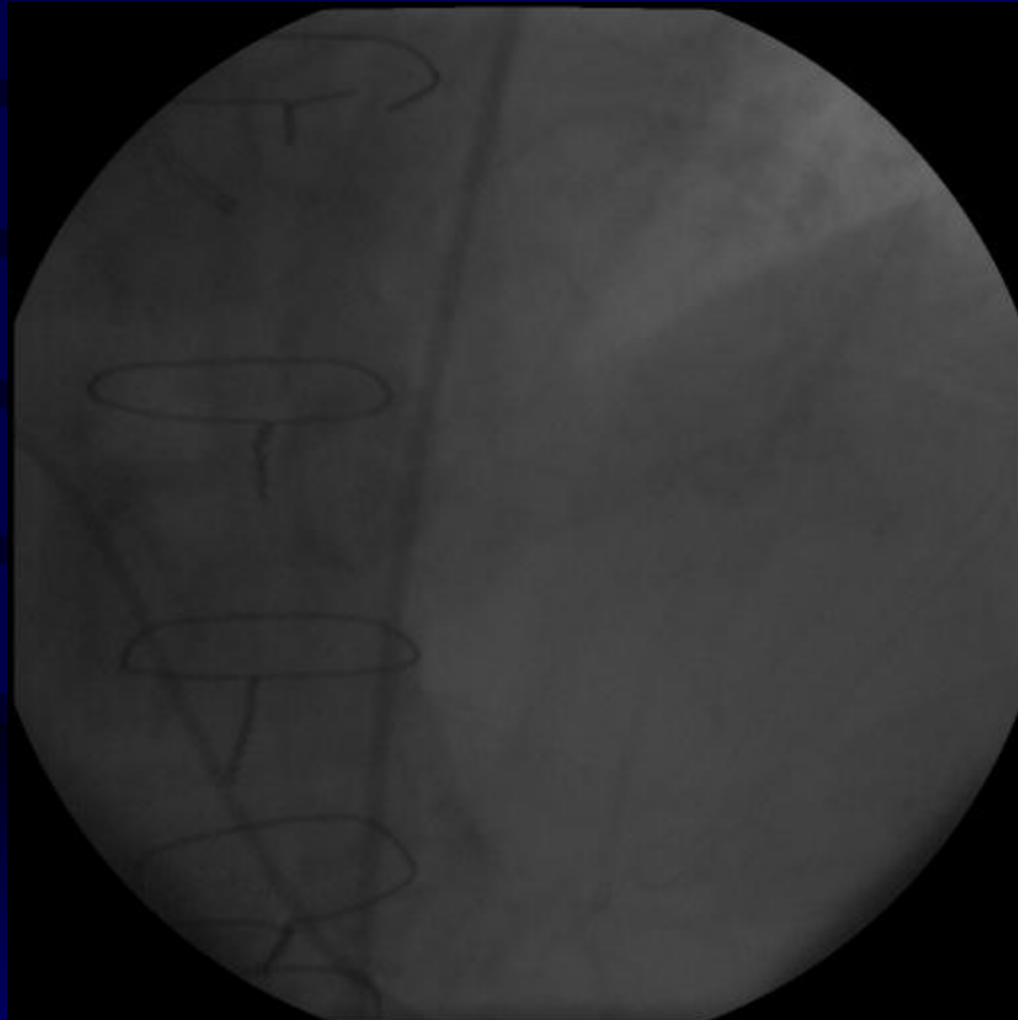


Global Advisory Board Meeting

# SVG→LAD



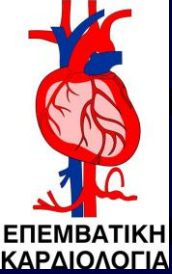
# SVG→LAD



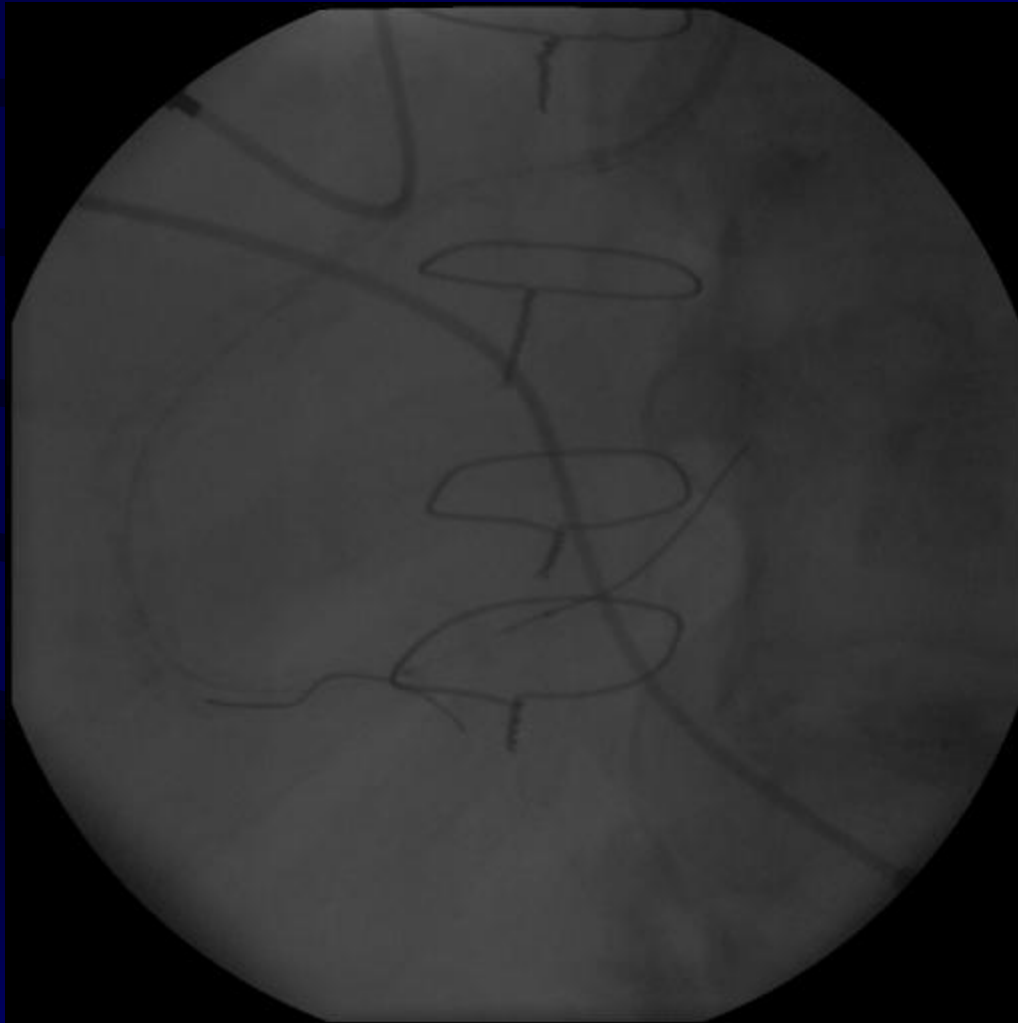


# Angiogram results

- Severe 3VD (LAD 70% prox and diffuse 70-80% after SVG anastomosis, 100% CX and severe calcified prox RCA 80% and 90% at origin of PLV)
- 60% SVG→LAD eccentric stenosis, 100% SVG→RCA, Mild disease of SVG→OM at its origin
- Any intervention postponed for 2<sup>nd</sup> time after appropriate planning and checking the response to given dye (110 ml)
- Crea at day 5→2.3 returned to 1.8 after 2 weeks and stabilized at that value – returned for PCI of RCA+LAD



# PCI→RCA



Global Advisory Board Meeting

# PCI→RCA (PLV)

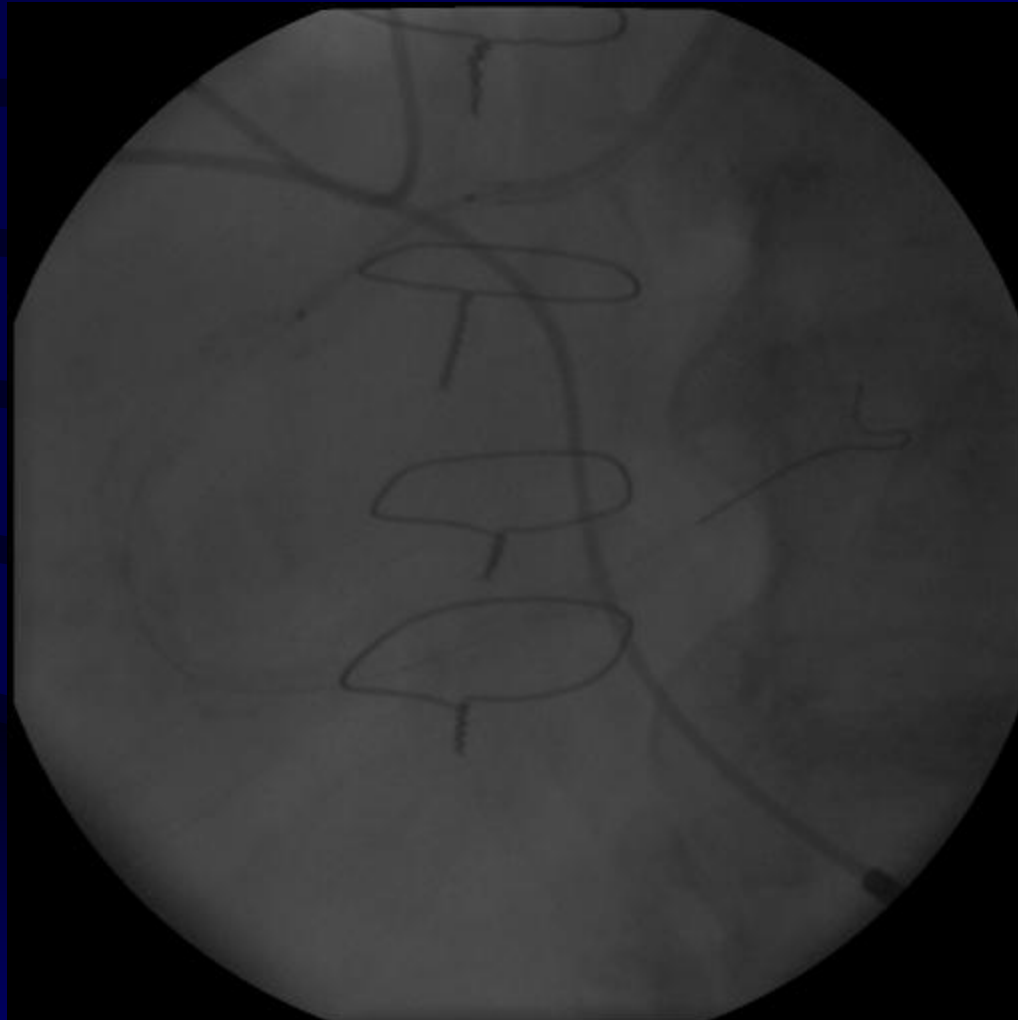
Endeavor Resolute  
2.75 x 18



Global Advisory Board Meeting

# PCI→RCA

Endeavor Sprint  
3.5x18

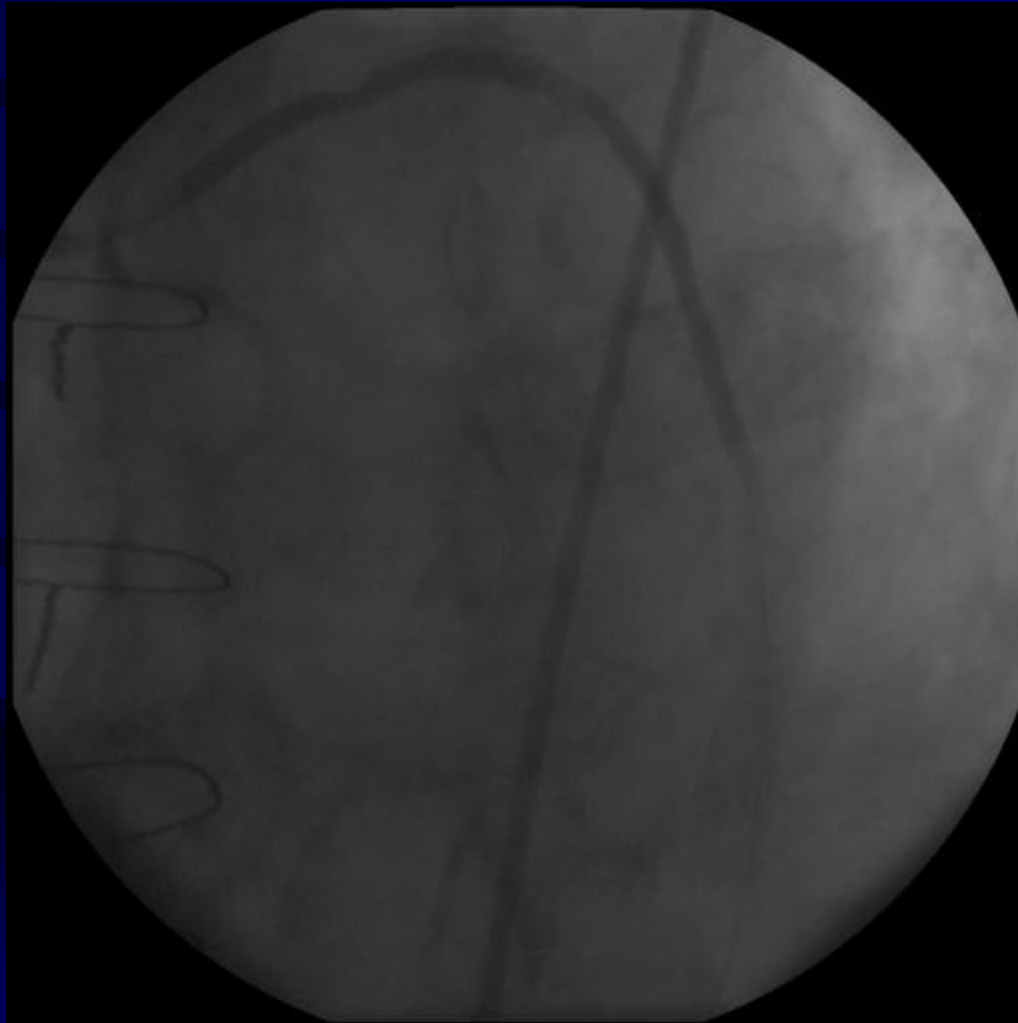


# PCI→RCA final



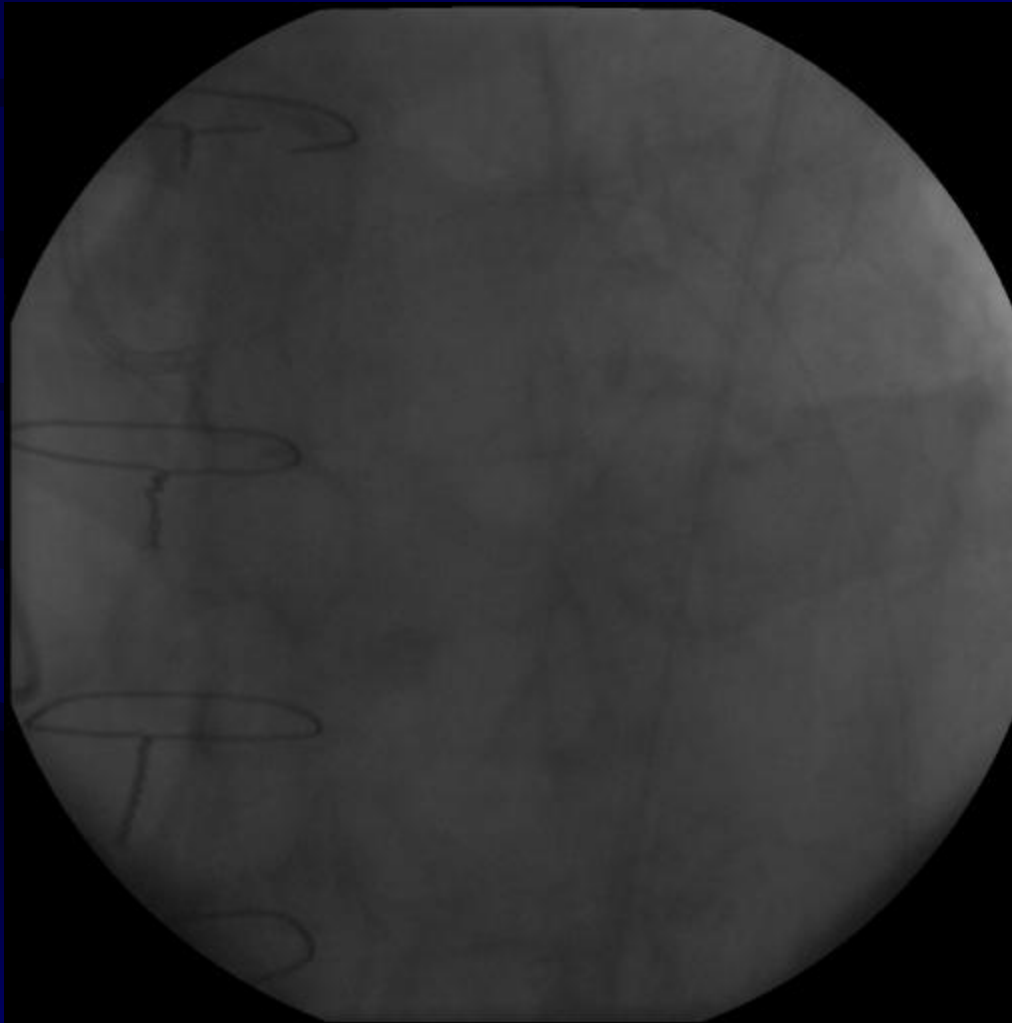
# PCI→LAD via SVG

Endeavor Resolute  
2.5x12 + 2.5x14

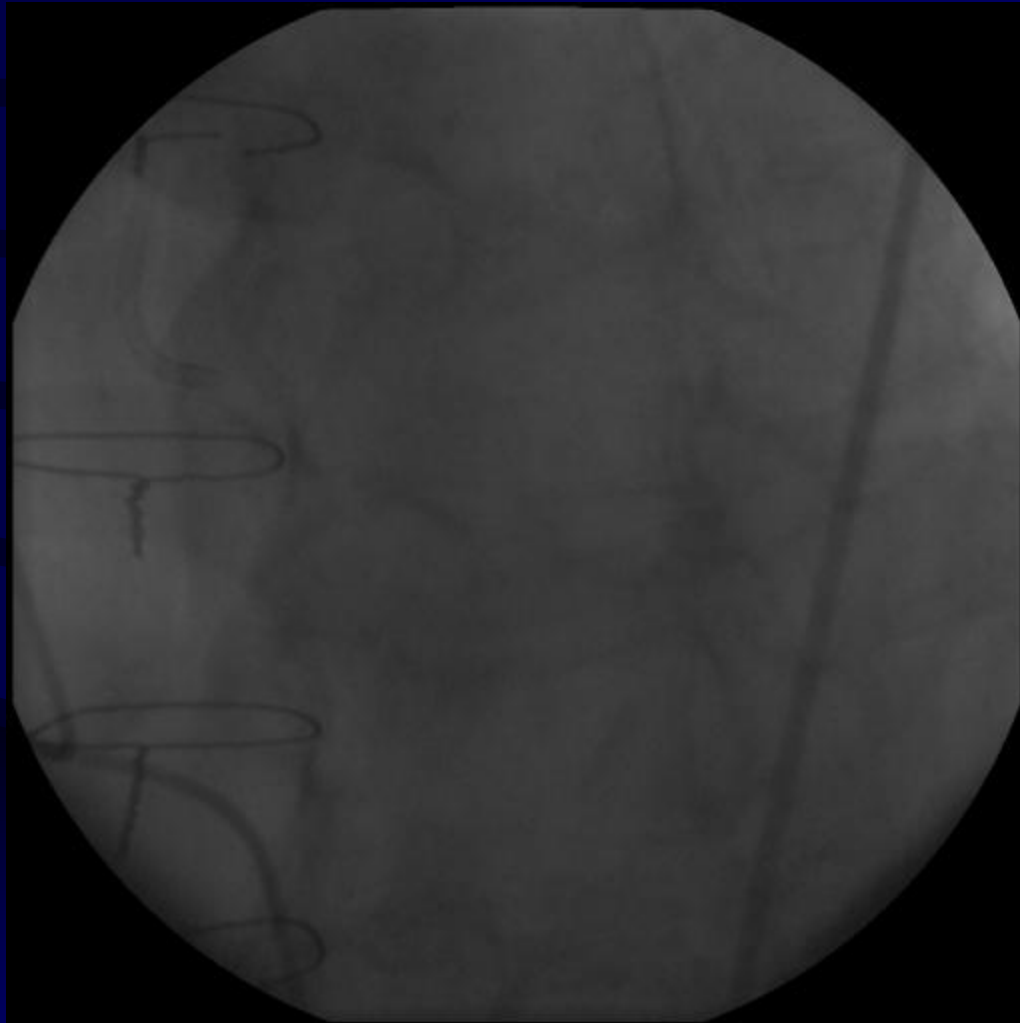


# PCI of SVG→LAD

Endeavor Resolute  
2.75x12



# PCI→LAD Final





# Case Characteristics- Conclusions

- Vessel tortuosity + severe calcification (RCA) – necessity of a deliverable stent
- Vessel size + SVG graft – necessity of reduced probability of ISR
- Increased age - ? Reduced duration of dual antiplatelet Rx