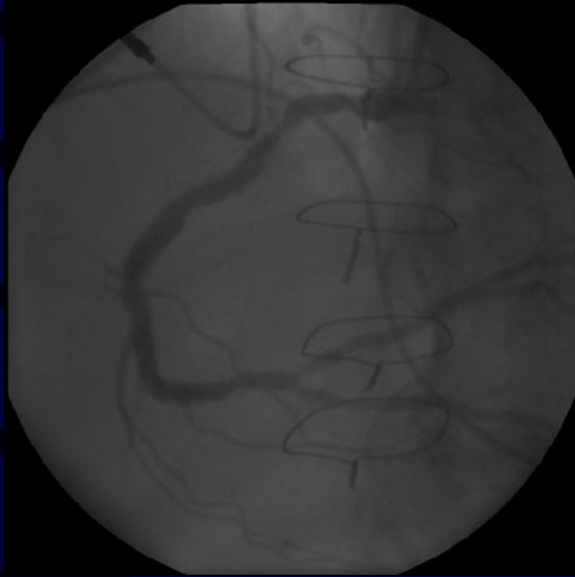


Case History

- 87 year old male with prior hx of CAD s/p CABGx3 in 2001 (SVG→LAD, SVG→OM, SVG→RCA), s/p Permanent Pacer in 2004, had 2 recent admissions for UA /Biomarker positive ACS stabilized with Rx – in good physical shape
- CRF: DM, HTN, Dyslipidemia, CRF (Crea=1.9)
- Echo with EF=45%, anterior+inferior hypokinesis, moderate MR – no stress test performed – referred for angiography

RCA PCI (Top) / SVG & LAD PCI (Bottom)

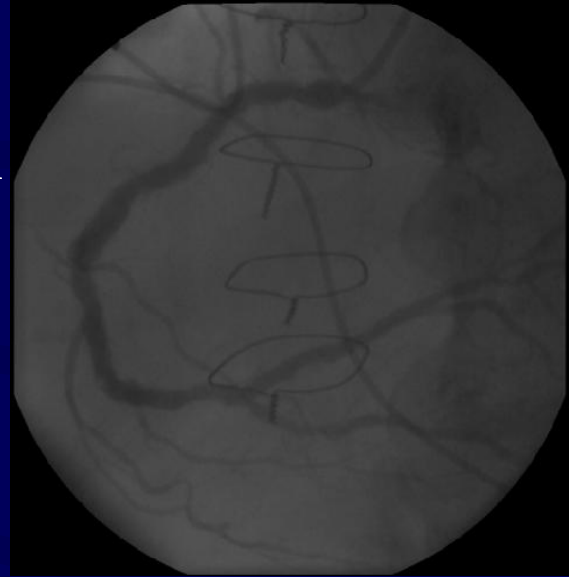
P
R
E



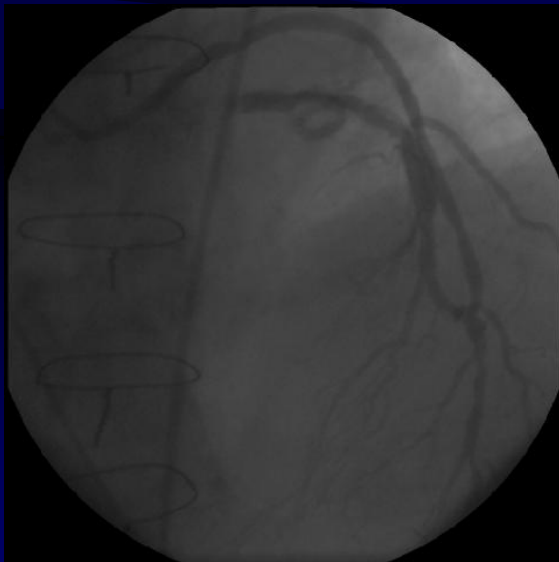
Endeavor S-Prox RCA
Endeavor R-Dist RCA



P
O
S
T



P
R
E



Endeavor R – SVG
& LAD



P
O
S
T



Case Characteristics - Conclusions

Vessel tortuosity + severe calcification
(RCA) – necessity of a deliverable stent



Vessel size + SVG graft + Multivessel PCI –
necessity of reduced probability of ISR

Increased age - ? Reduced duration of dual
antiplatelet Rx

Endeavor stent LIA

